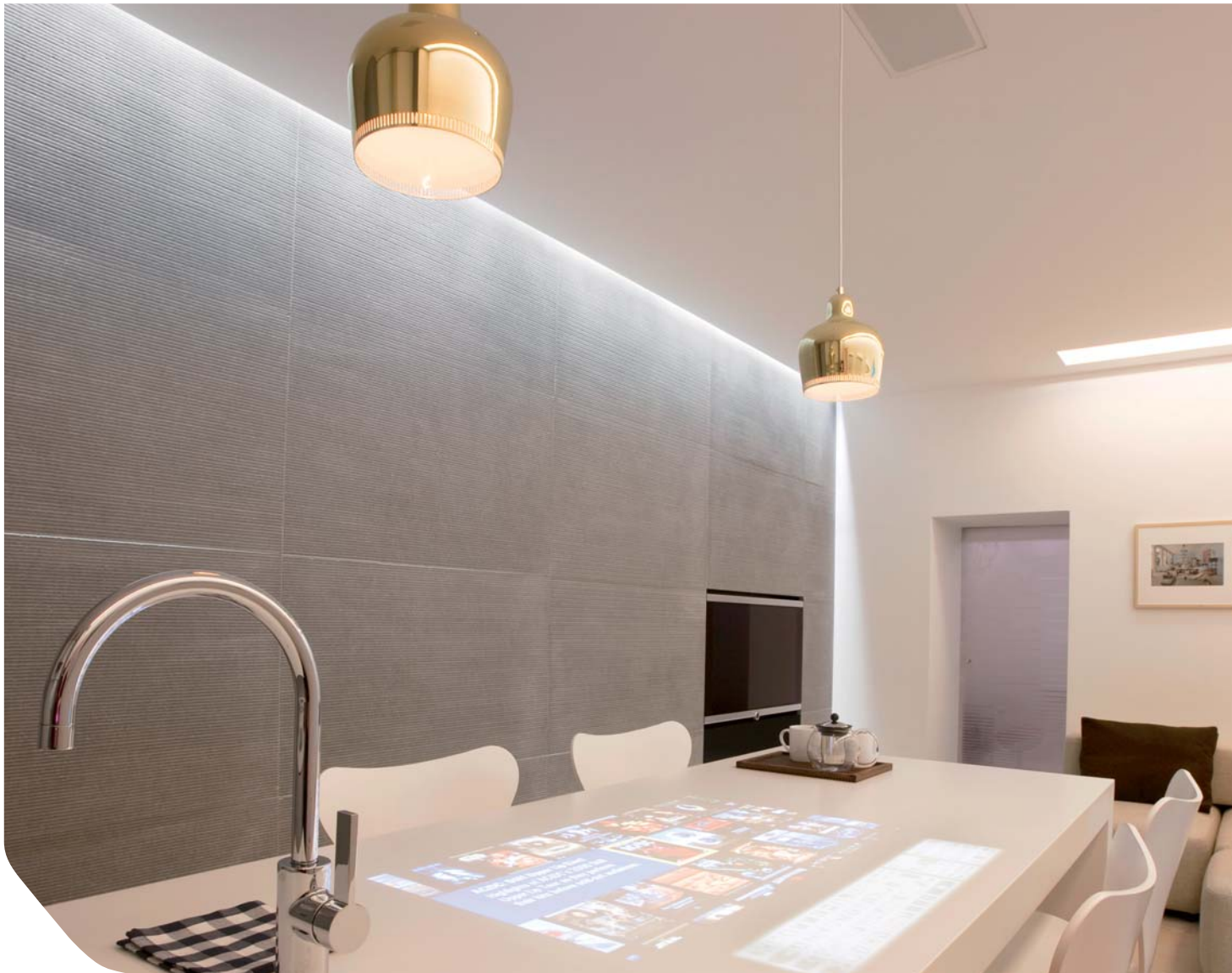


traxone:cue

AN OSRAM BUSINESS

PHOTOGRAPHY © 2010 GABRIEL KOWALSKI



Cove Light AC HE

Simple. Energy Efficient. Cost-effective linear illumination.

Powered directly with line voltage, Cove Light AC HE is a highly energy and cost-efficient linear illumination solution, which further extends the Ambiance & Accent product family. With an efficacy of 60 to 68 lumens per watt across the range, Cove Light AC HE uses 3.1 watts per foot and is suitable for interior architectural, hospitality, retail, and even residential applications where rich, white wall washing and glowing alcoves with the lowest energy consumption are required.



FLEXIBILITY Highly efficient LEDs output a variety of three color temperatures ranging from comforting hues of warm (2700K, 3000K) to neutral (4000K) white. 180° (+/- 90°) rotation axis allows flexible aiming in 5° increments.

SIMPLICITY AC line voltage eliminates the need for external power supplies and enables daisy chain topology for easy installation and extended run lengths of up to 150 feet at 110V and 300 feet at 220V.

INNOVATION Low profile and ultra wide beam spread of 120° x 120°. High energy efficiency (60 – 68 lumens per watt across the range of CCTs).








Downloads and more information at
www.traxontechnologies.com and www.ecue.com

FLEXIBILITY, SIMPLICITY & INNOVATION IN LIGHTING SOLUTIONS & SERVICES

Using line voltage and featuring a Plug'n'Play wiring system, Cove Light AC HE eliminates the need for external power supplies or complex wiring, enabling extended run lengths and easy installation. Available in three dedicated color temperatures, ranging from a warm 2700K to a neutral 4000K, Cove Light AC HE is equipped with a 180° rotation axis and locking rotations in 5° increments for flexible aiming. Highly efficient, its efficacy is 60 to 68 lumens per watt and it uses 3.1 watts per foot.

Cove Light AC HE is an ideal solution for a variety of ambient lighting applications.

Technical Specifications & Options

BEAM ANGLE			
COLOR	 2700K Warm White	 3000K Warm White	 4000K Neutral White
ENVIRONMENT	 Indoor		
TECHNICAL SPECIFICATIONS	COLOR TEMPERATURE:	2700 K, 3000 K, 4000 K	
	CRI:	85RA	
	Luminous Flux:	185 LM - 211 LM	
	EFFICACY:	60 LM/W - 68 LM/W	
	POWER CONSUMPTION:	TYP. 3.1W @ 120 VAC TYP. 3.5W @ 220 VAC	
	OPERATING TEMPERATURE:	0°C TO 40°C / -32°F TO 104°F	
	POWER FACTOR:	> 0.9	
			 

Cove Light AC HE

